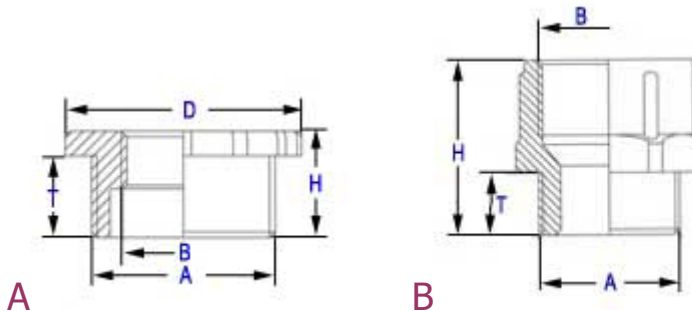


Nylon Reducers METRIC to METRIC Threads

Is your thread size off by one size? Well, then these **REDUCERS** will solve that threading problem. They convert holes which fit NPT / PG / Metric threads to a larger female thread of the same thread type.

The use of a **THREADED REDUCER** is usually the quickest, easiest & most affordable solution to enlarge the thread size on any threaded connector or plug.



TECHNICAL INFORMATION

SPECIFICATIONS

MATERIALS: Gray Nylon

OPERATING TEMPERATURE

-4°F to 176 °F
(-20°C to 80°C)

REDUCERS - METRIC to METRIC THREADS

Part Nr.	Type	Male Thread	Female Thread	Thread Length	Height	Outer Dia.	Wrench Flats
		A	B	T	H	D	W
RR-1612-GY	B	M16 x 1,5	M12 x 1,5	.35 (9)	1.06 (27)	.87 (22)	.79 (20)
RR-2016-GY	B	M20 x 1,5	M16 x 1,5	.35 (9)	1.06 (27)	1.06 (27)	.94 (24)
RR-2520-GY	A	M25 x 1,5	M20 x 1,5	.39 (10)	.67 (17)	1.26 (32)	1.14 (29)
RR-3225-GY	A	M32 x 1,5	M25 x 1,5	.47 (12)	.75 (19)	1.57 (40)	1.42 (36)
RR-4032-GY	A	M40 x 1,5	M32 x 1,5	.47 (12)	.75 (19)	2.01 (51)	1.81 (46)
RR-5040-GY	A	M50 x 1,5	M40 x 1,5	.55 (14)	.83 (21)	2.40 (61)	2.16 (55)
RR-6350-GY	A	M63 x 1,5	M50 x 1,5	.59 (15)	.87 (22)	2.95 (75)	2.68 (68)

[NOTE : TECHNICAL SPECIFICATIONS MAY CHANGE, WITHOUT ANY PRIOR NOTIFICATION]



NOVAMAX INDUSTRIAL INTL LLC 8200 S Quebec St Suite A-3 Englewood, CO 80112
Phone (303) 470-7226 Fax (303) 470-5773 Toll-Free 1-800-594-3380 www.novamaxindustrial.com

